

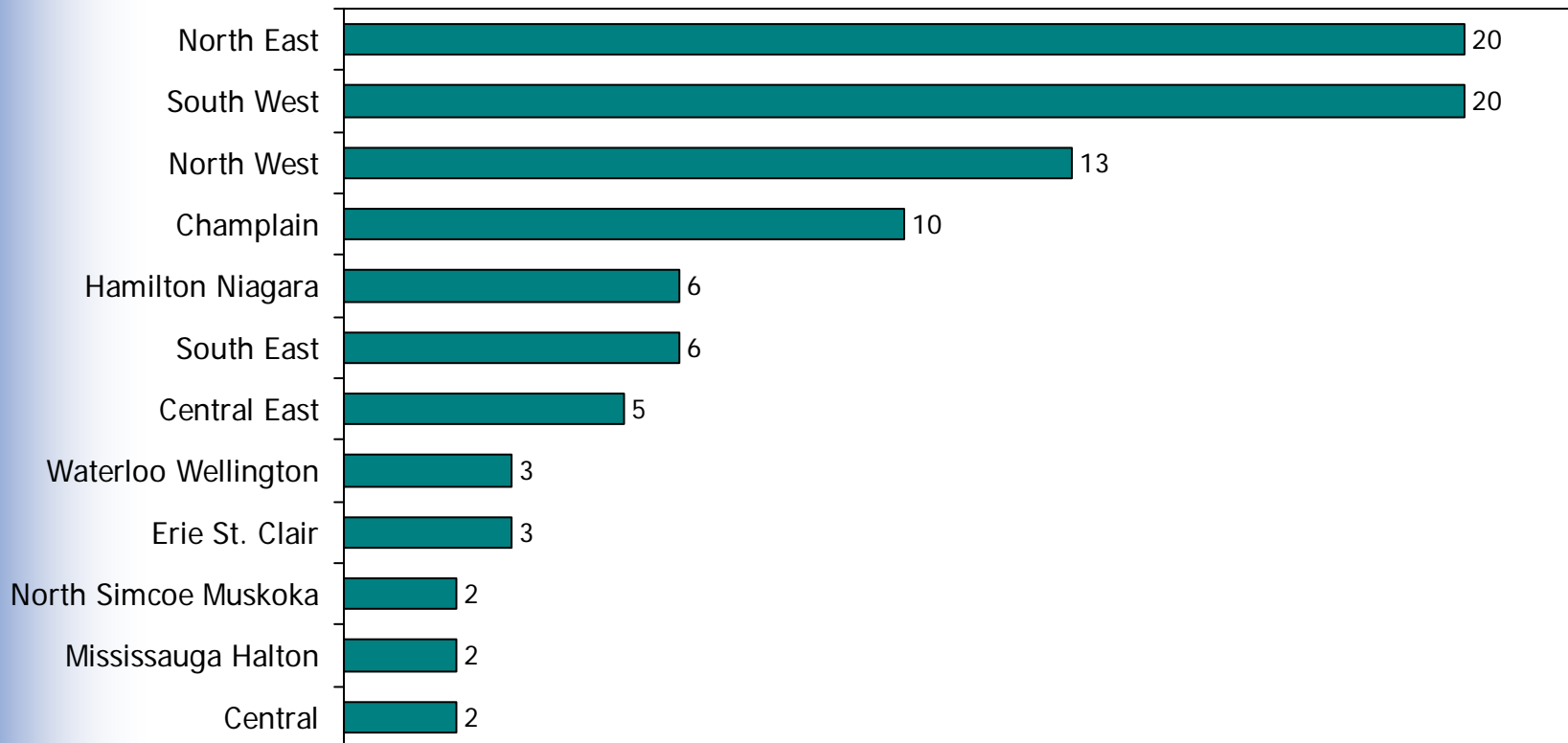


Ontario's Small, Rural and Northern Hospitals

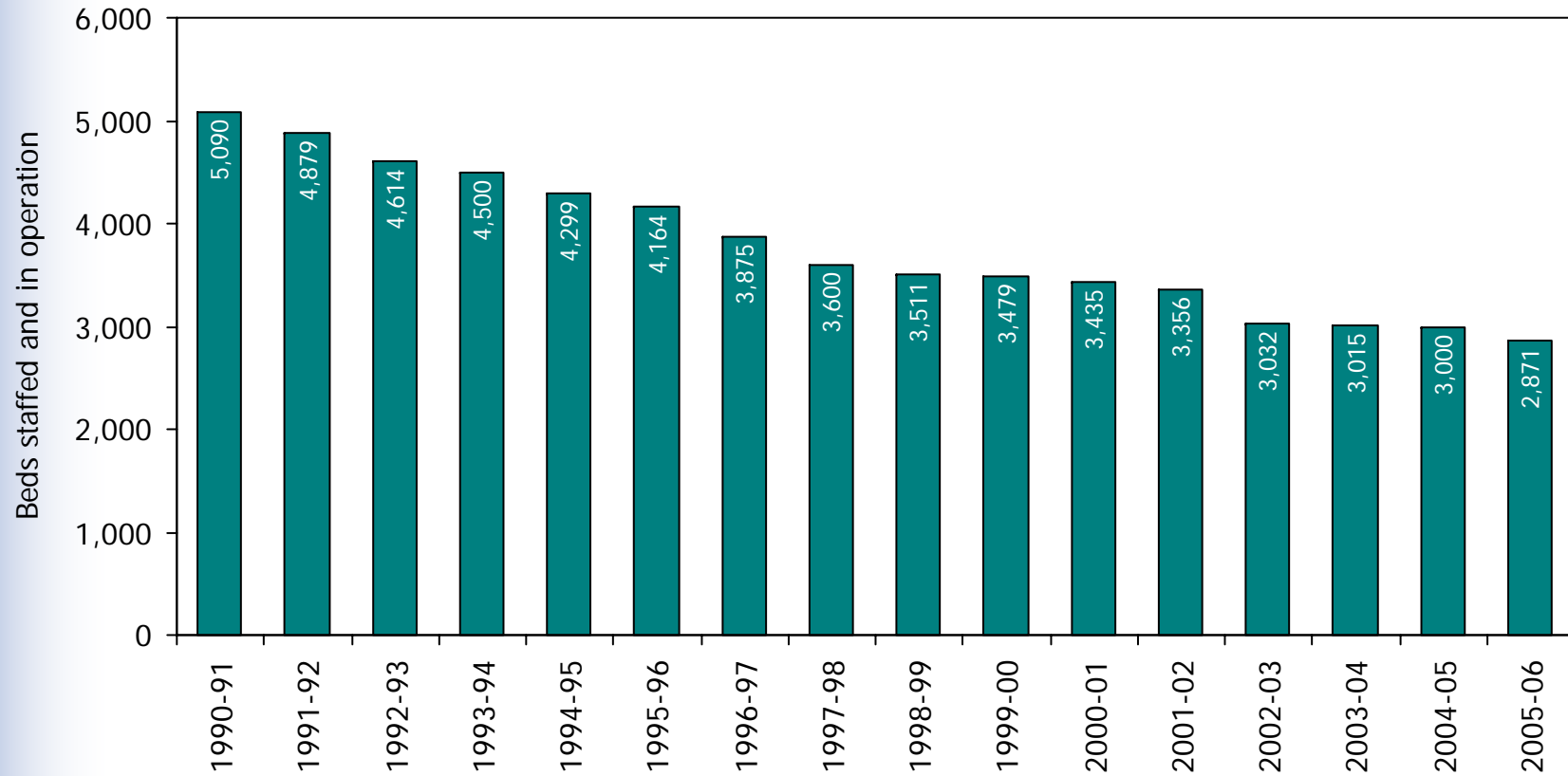
Facts and Figures
2006

Small hospital sites by Local Health Integration Network

Hospital sites are considered small if they had less than 4,000 inpatient weighted cases in 2004-05.
There are 92 small hospital sites in 75 corporations in Ontario.
The Toronto Central and Central West LHINs do not have small hospital sites.

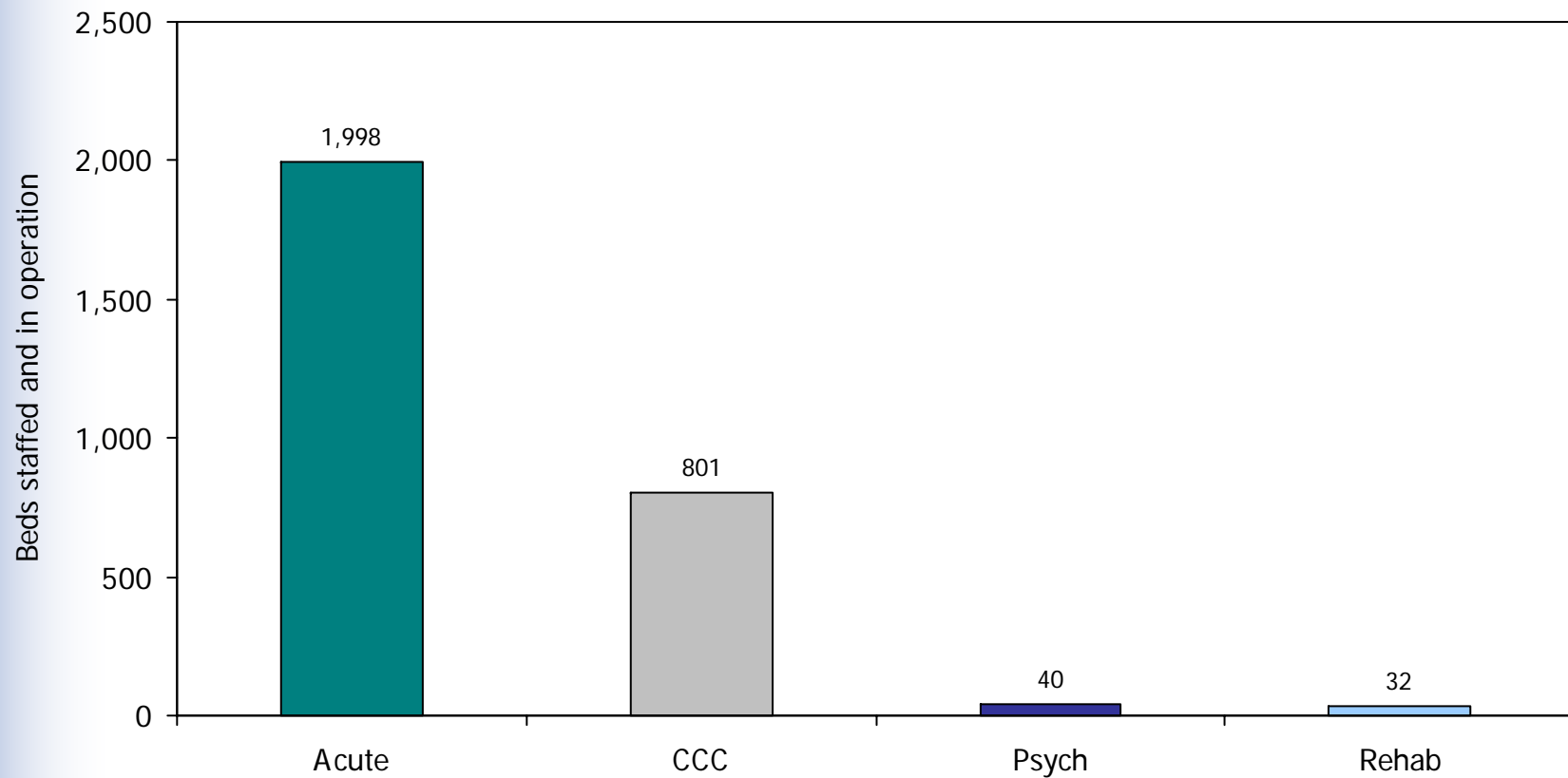


Number of beds staffed and in operation, 1990-91 to 2005-06



Sources: Hospital Statistics, 1990-91 to 1992-93.
Daily Census Summary, Ministry of Health and Long Term Care, 1993-94 to 2005-06.

Number of beds staffed and in operation, by type, 2005-06



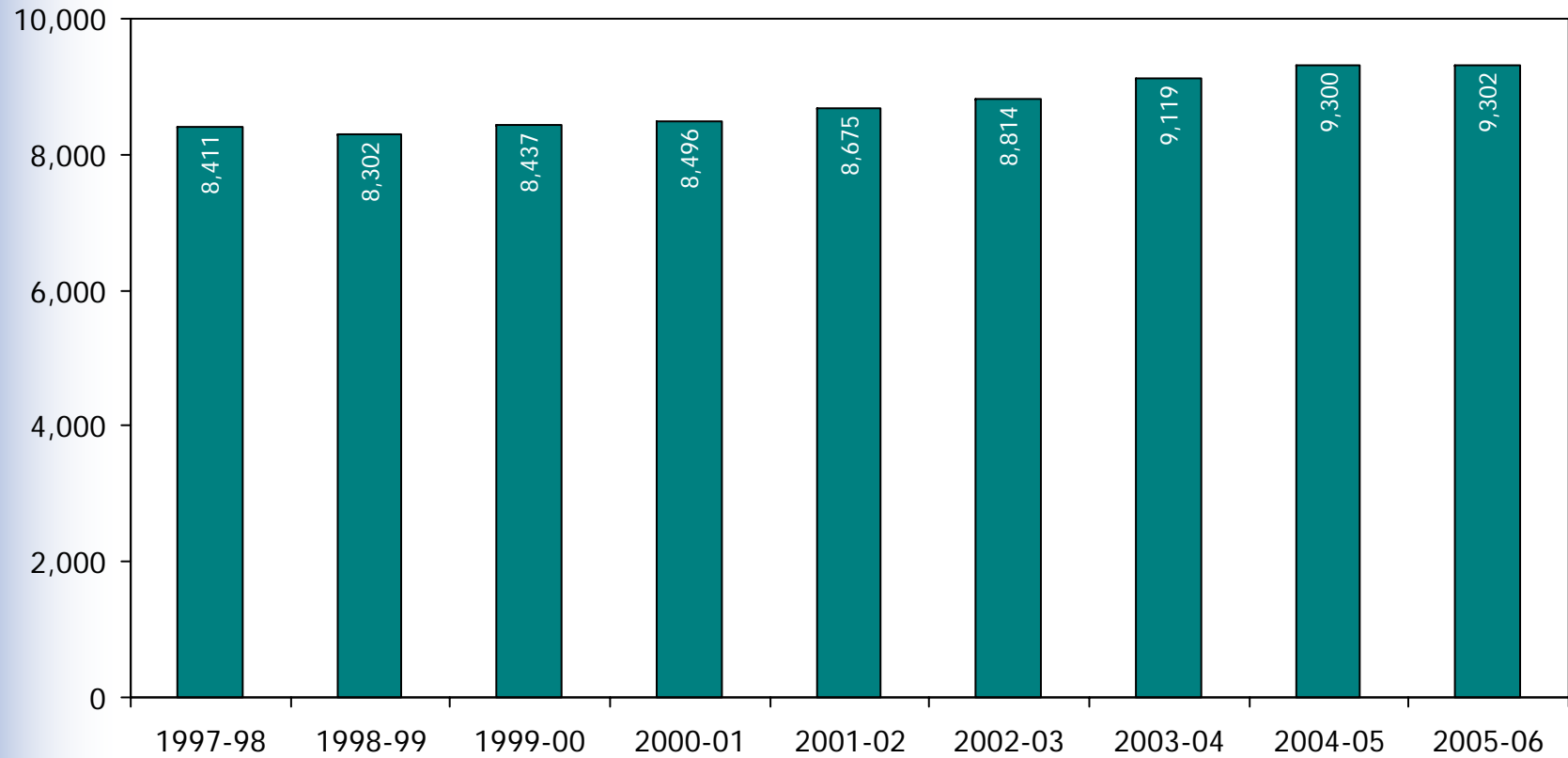
Sources: Daily Census Summary, Ministry of Health and Long Term Care, 2006.

Note: CCC refers to complex continuing care.

Number of beds staffed and in operation, 1991-92 to 2005-06

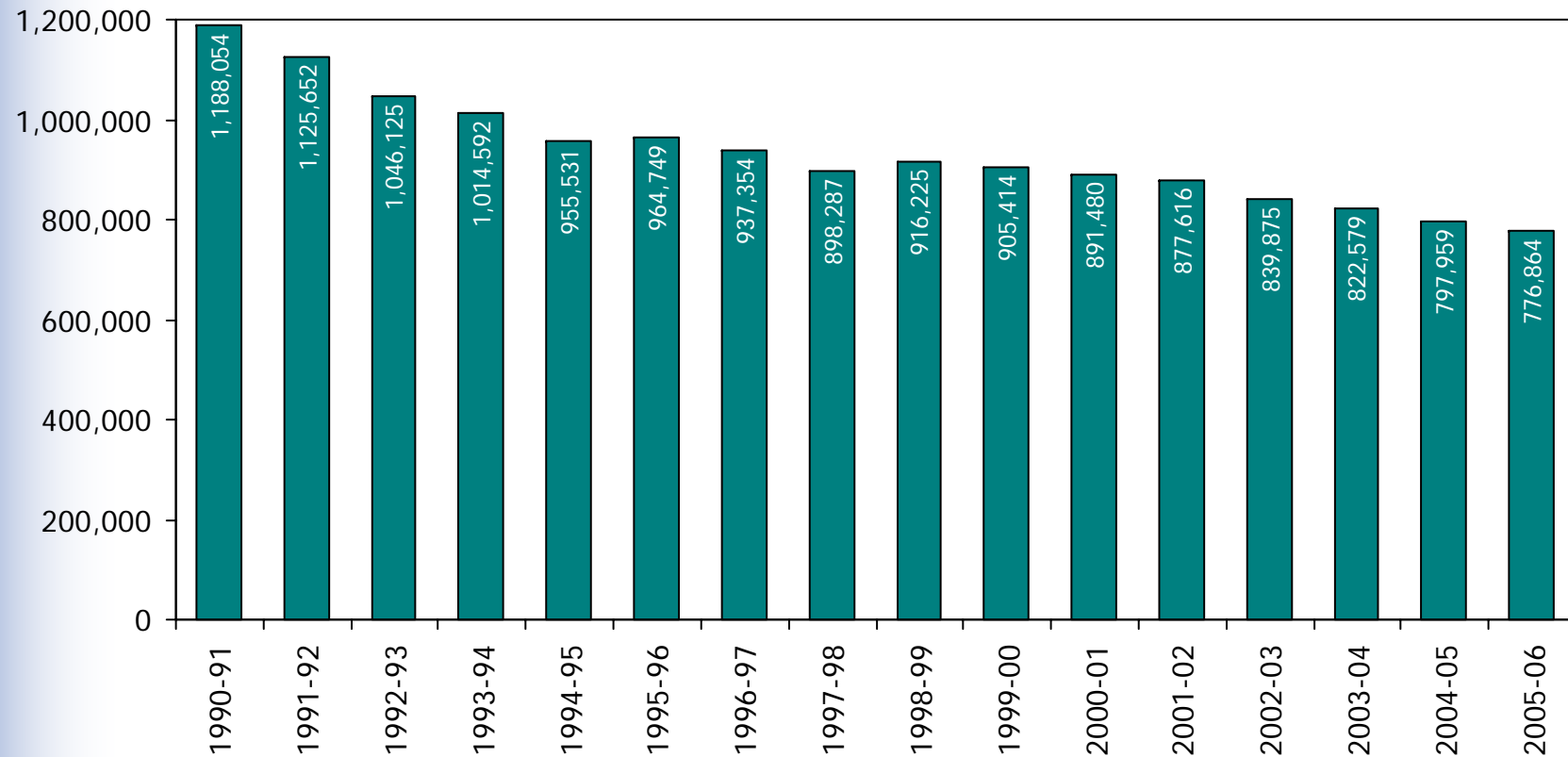
Year	Acute	CCC	Rehab	Psych	Total
1990-91	3,540	1,508		42	5,090
1991-92	3,299	1,538		42	4,879
1992-93	3,069	1,503		42	4,614
1993-94	2,986	1,472		42	4,500
1994-95	2,823	1,434		42	4,299
1995-96	2,715	1,407		42	4,164
1996-97	2,471	1,362		42	3,875
1997-98	2,253	1,303	5	39	3,600
1998-99	2,188	1,279	5	39	3,511
1999-00	2,199	1,235	5	40	3,479
2000-01	2,176	1,208	11	40	3,435
2001-02	2,131	1,174	11	40	3,356
2002-03	2,025	956	11	40	3,032
2003-04	2,039	907	29	40	3,015
2004-05	2,064	868	27	41	3,000
2005-06	1,998	801	32	40	2,871

Full Time Equivalents, 1997-98 to 2005-06



Source: Ministry of Health and Long Term Care, 2006.

Patient days, 1990-91 to 2005-06

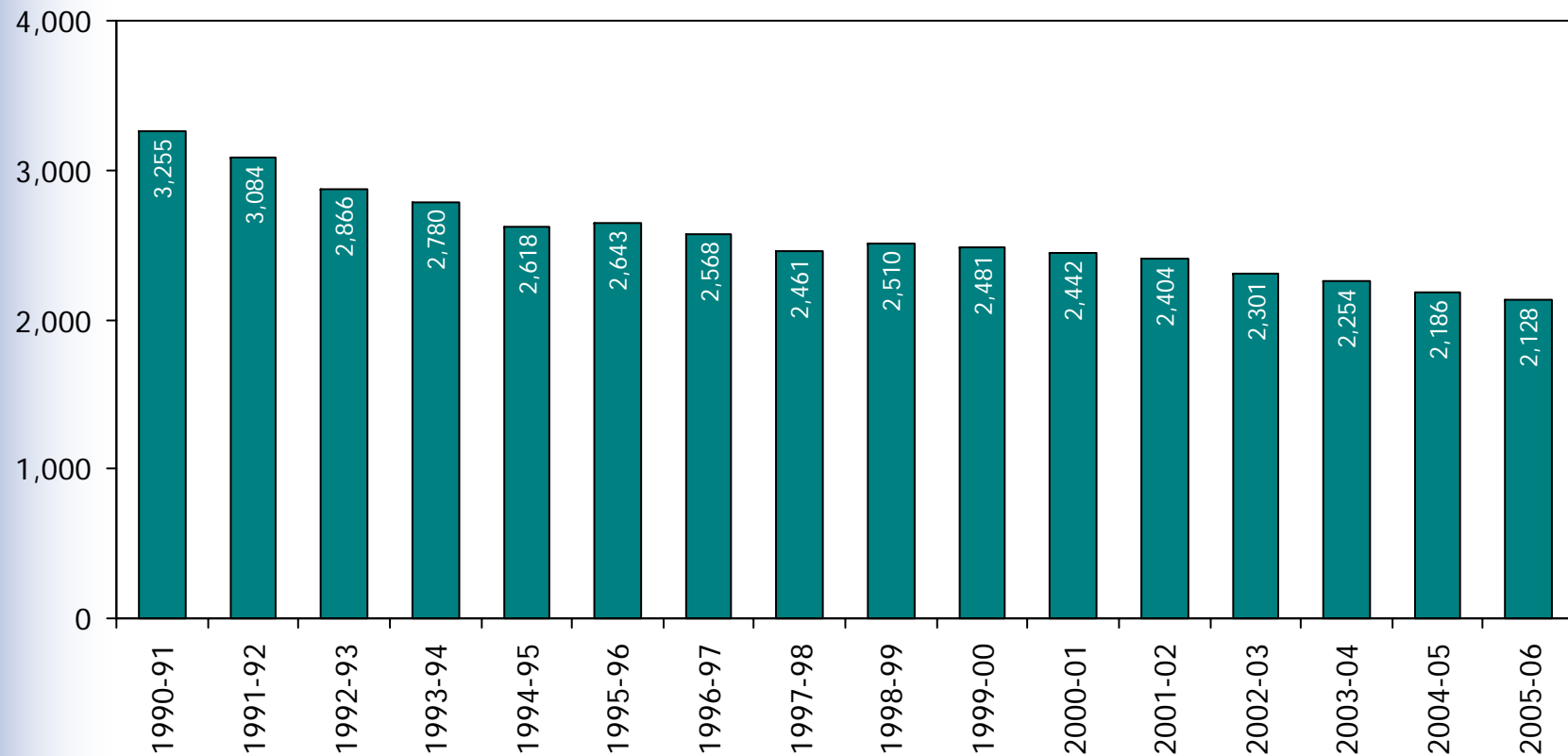


Sources: Hospital Statistics, 1990-91 to 1992-93.

Daily Census Summary, Ministry of Health and Long Term Care, 1993-94 to 2005-06.

Note: Includes acute (including acute psychiatric patient days in acute hospitals), complex continuing care and rehab.

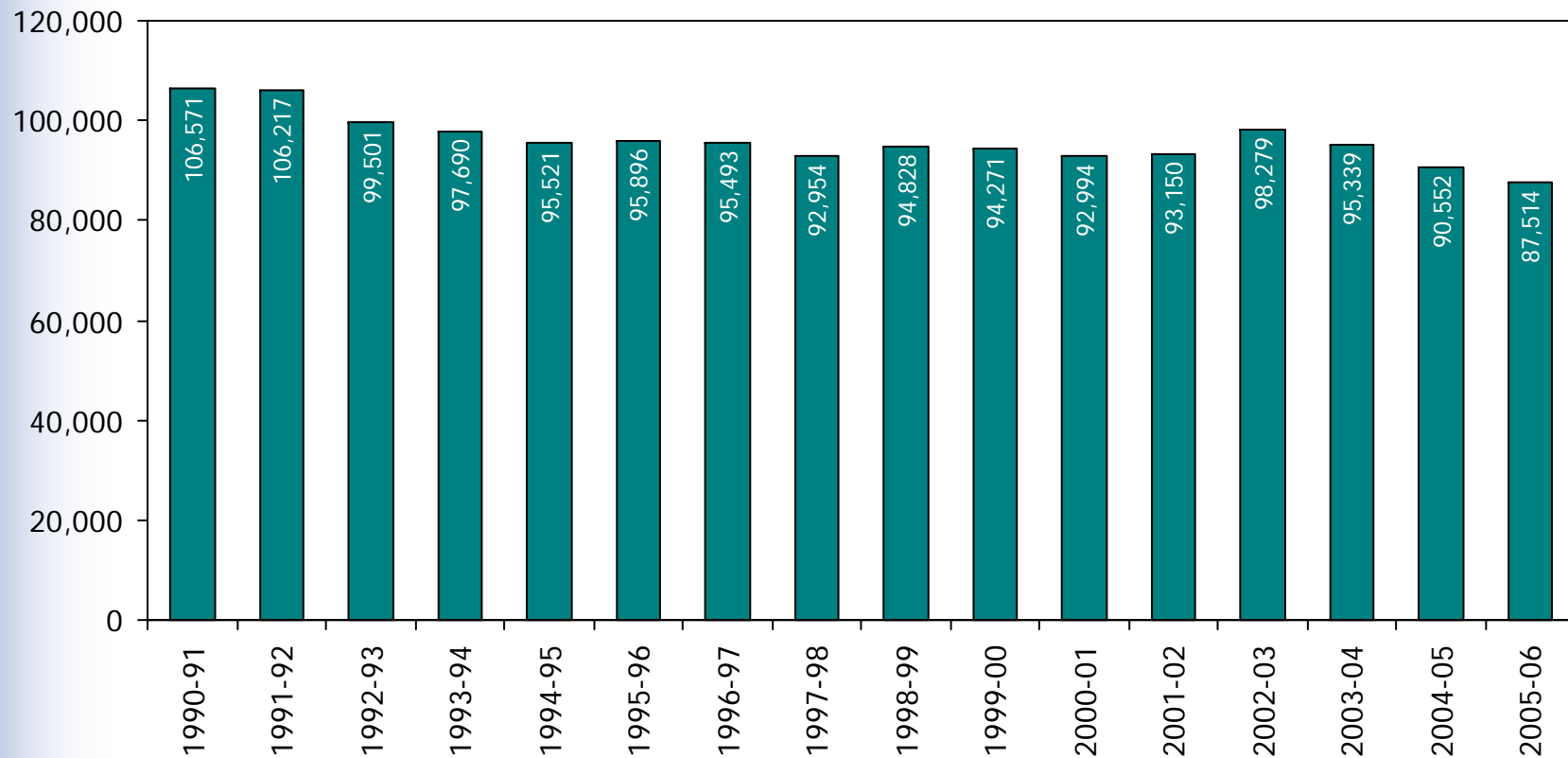
Average number of inpatients on any given day, 1990-91 to 2005-06



Sources: Hospital Statistics, 1990-91 to 1992-93.
Daily Census Summary, Ministry of Health and Long Term Care, 1993-94 to 2005-06.

Note: Includes acute (including acute psychiatric patient days in acute hospitals), complex continuing care and rehab.

Inpatient separations, 1990-91 to 2005-06

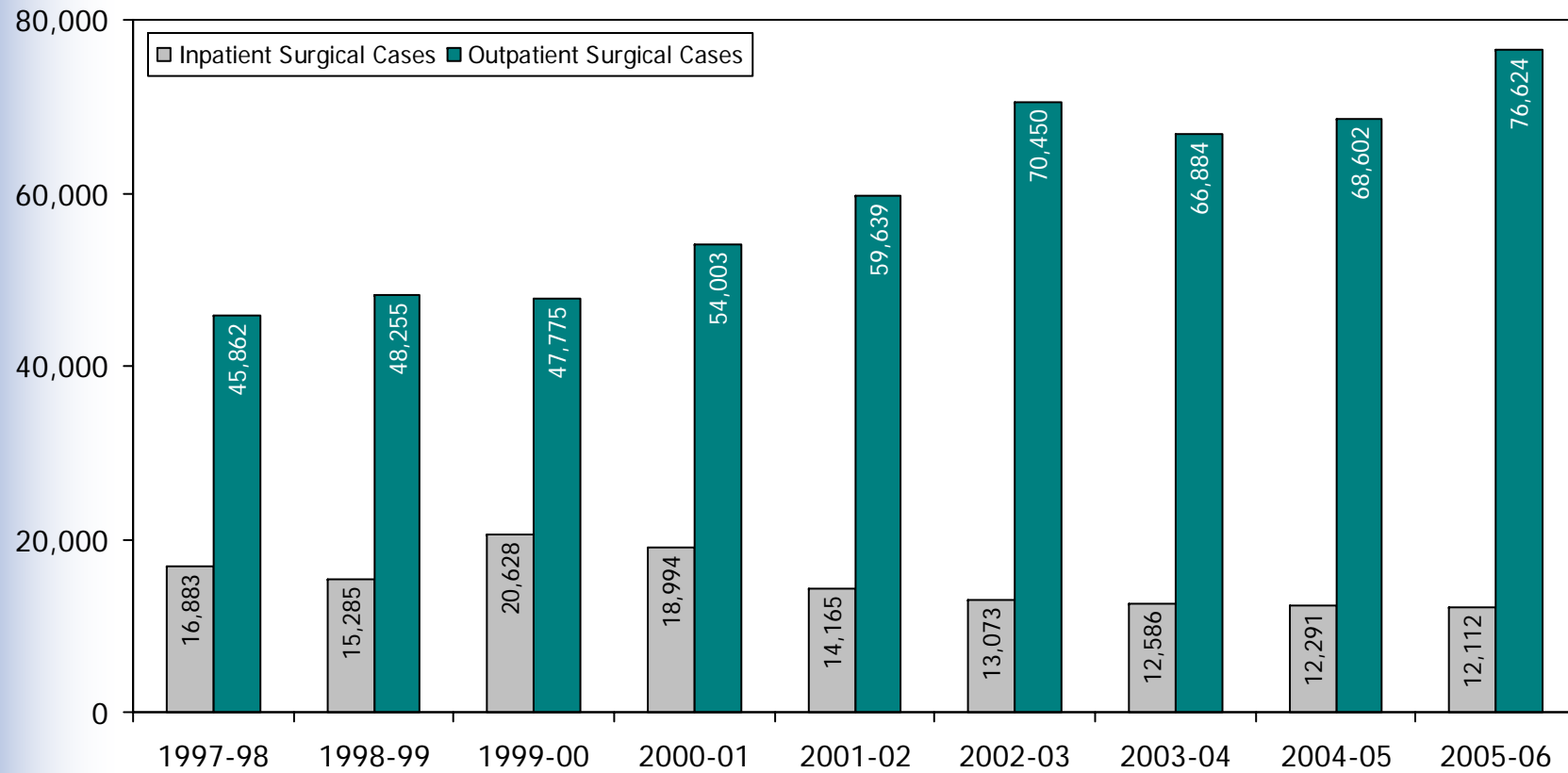


Sources: Hospital Statistics, 1990-91 to 1992-93.

Daily Census Summary, Ministry of Health and Long Term Care, 1993-94 to 2005-06.

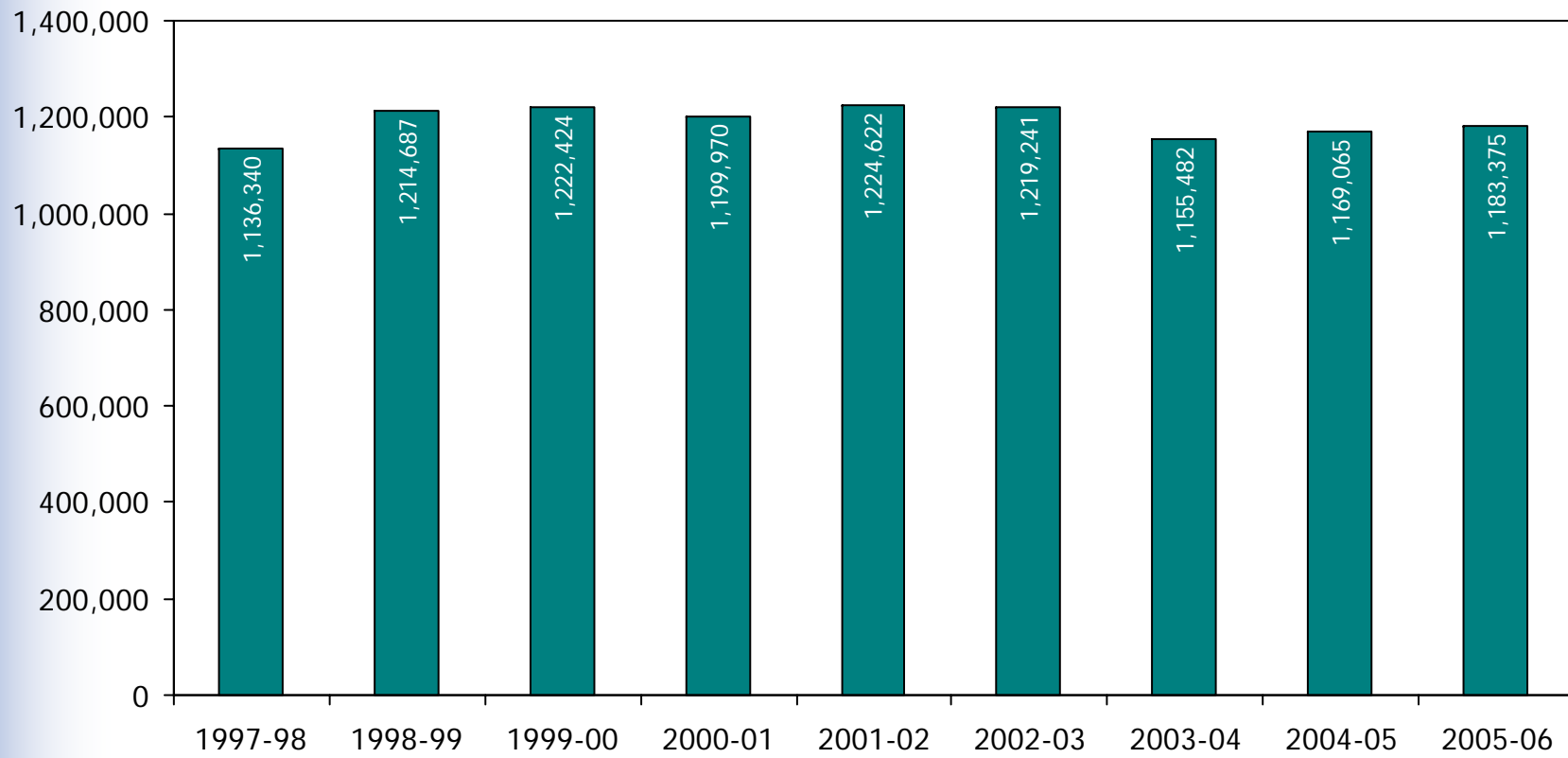
Note: Includes acute (including acute psychiatric patient days in acute hospitals), complex continuing care and rehab.

Inpatient and outpatient surgical cases, 1997-98 to 2005-06



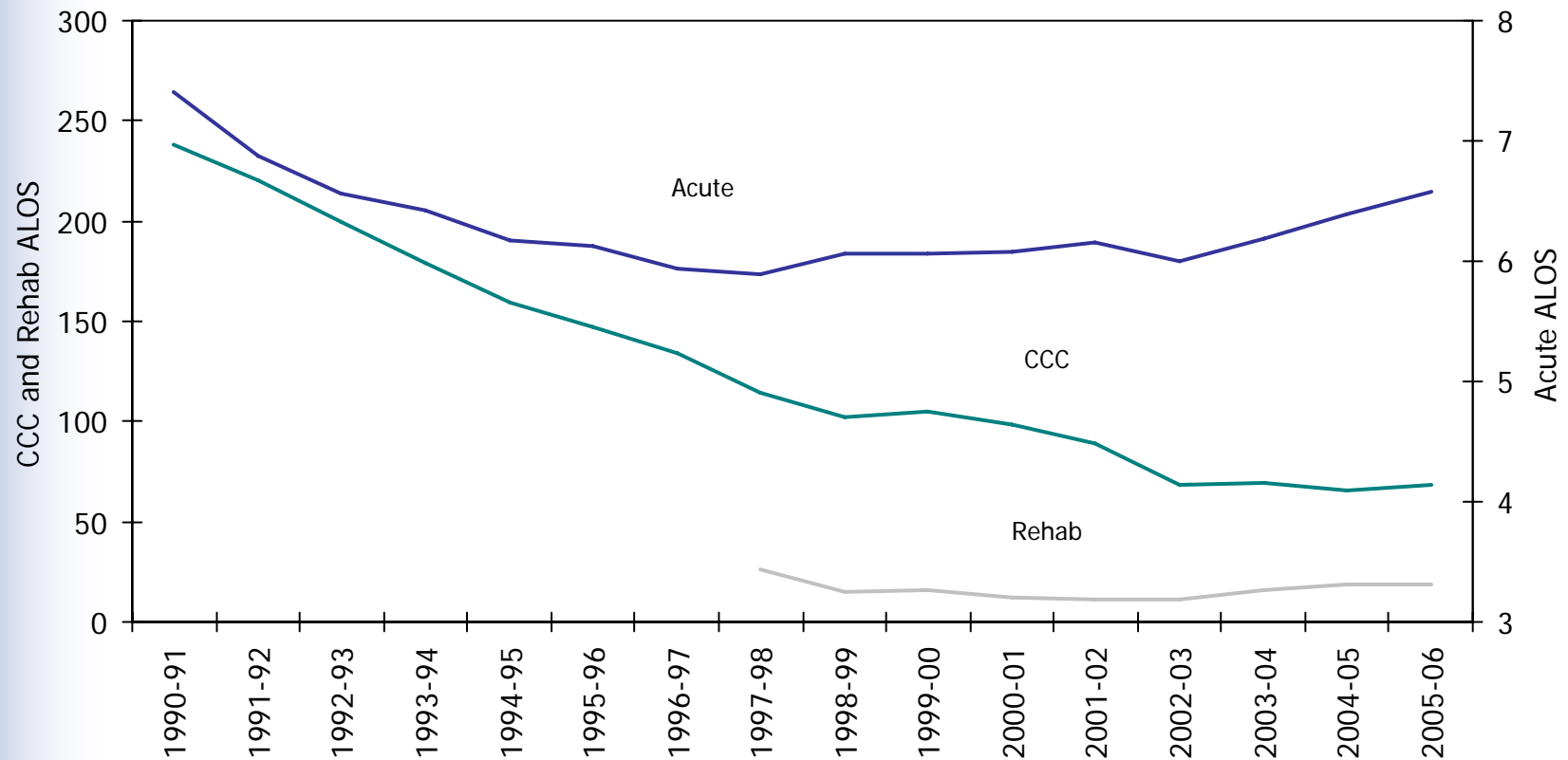
Source: Ministry of Health and Long Term Care, 2006.

Emergency visits, 1997-98 to 2005-06



Source: Ministry of Health and Long Term Care, 2006.

Average length of stay by bed type, 1990-91 to 2005-06



Sources: Hospital Statistics, 1990-91 to 1992-93.
 Daily Census Summary, Ministry of Health and Long Term Care, 1993-94 to 2005-06.

Note: Acute includes acute psychiatric patient length of stay in acute hospitals.

Small hospital sites by Local Health Integration Network

Erie St. Clair	Sites
Bluewater Health	1
Leamington District Memorial Hospital	1
Sydenham District Hospital	1
South West	Sites
Alexandra Hospital	1
Alexandra Marine & General Hospital	1
Clinton Public Hospital	1
Four Counties Health Services	1
Grey Bruce Health Services	4
Hanover and District Hospital	1
Listowel Memorial Hospital	1
Seaforth Community Hospital	1
South Bruce Grey Health Centre	4
South Huron Hospital Association	1
St. Marys Memorial Hospital	1
Strathroy Middlesex General Hospital	1
Tillsonburg District Memorial Hospital	1
Wingham and District Hospital	1

Waterloo Wellington	Sites
Groves Memorial Community Hospital	1
North Wellington Health Care Corporation	2
Hamilton Niagara Haldimand Brant	Sites
Haldimand War Memorial Hospital	1
Niagara Health System	3
West Haldimand General Hospital	1
West Lincoln Memorial Hospital	1
Mississauga Halton	Sites
Halton Healthcare Corporation	2
Central	Sites
Markham Stouffville Hospital	1
The Stevenson Memorial Hospital	1
Central East	Sites
Campbellford Memorial Hospital	1
Haliburton Highlands Health Services	1
Lakeridge Healthcare Corporation	2
Northumberland Hills Hospital	1

Small hospital sites by Local Health Integration Network

South East	Sites
Lennox & Addington County General Hosp.	1
Perth & Smiths Falls District Hospital	2
Quinte Healthcare	3
South West	Sites
Almonte General Hospital	1
Arnprior and District Memorial Hospital	1
Carleton Place & District Memorial Hospital	1
Deep River and District Hospital	1
Glengarry Memorial Hospital	1
Hôpital régional de Hawkesbury	1
Kemptville District Hospital	1
Renfrew Victoria Hospital	1
St. Francis Memorial Hospital	1
Winchester District Memorial Hospital	1
North Simcoe Muskoka	Sites
Huntsville District Memorial Hospital	1
South Muskoka Memorial Hospital	1

North East	Sites
Anson General Hospital	1
Bingham Memorial Hospital	1
Blind River District Health Centre	1
Englehart & District Hospital	1
Espanola General Hospital	1
Hôpital Notre-Dame Hospital	1
Hornepayne Community Hospital	1
Kirkland and District Hospital	1
Lady Dunn Health Centre	1
Manitoulin Health Centre	2
Mattawa General Hospital	1
Sensenbrenner Hospital	1
Services de santé de Chapleau Health	1
Smooth Rock Falls Hospital	1
St. Joseph's General Hospital (Elliot Lake)	1
Temiskaming Hospital	1
The Lady Minto Hospital	1

Small hospital sites by Local Health Integration Network

North East	Sites
West Nipissing General Hospital	1
West Parry Sound Health Centre	1
North West	Sites
Atikokan General Hospital	1
Dryden Regional Health Centre	1
Geraldton District Hospital	1
Lake of the Woods District Hospital	1
Manitouwadge General Hospital	1
McCausland Hospital	1
Nipigon District Memorial Hospital	1
Red Lake Margaret Cochenour Memorial Hospital	1
Riverside Health Care Facilities	3
Sioux Lookout Meno-Ya-Win Health Centre	1
Wilson Memorial General Hospital	1